



ANTIOCH UNIVERSITY
**Office of Institutional
Effectiveness**

2021 ANTIOCH UNIVERSITY FACT BOOK

Prepared by:

The University Office of Institutional Effectiveness

Teresa Kaldor, PhD

Director

Cynthia Cain Fitzgerald

Manager of Business Intelligence Analytics

Jessica Grater

Institutional Research Analyst

PREFACE

The Office of Institutional Effectiveness (OIE) proudly presents the 2021 Antioch University Fact Book, the fourth edition under our watch.

For this year, we added the following sections:

1. Annual Enrollment by Program Modality
2. Annual Enrollment by State
3. Annual Enrollment by Country of Citizenship

As always, we thank everyone who have helped us validate the data. We are grateful to the following departments: Enrollment Operations, the Registrar's Office, Finance and Financial Aid.

We look forward to creating more content for the Fact Book in the coming year.

The Office of Institutional Effectiveness

1	RECRUITMENT AND ADMISSIONS	3
2	ENROLLMENT DATA BY CAMPUS	4
2.1	FALL ENROLLMENT DATA	4
2.2	ANNUAL ENROLLMENT DATA.....	6
3	ENROLLMENT DATA BY PROGRAM	8
4	STUDENT DEMOGRAPHICS	16
4.1	GENDER.....	16
4.2	RACE/ETHNICITY.....	17
4.4	STATE OF RESIDENCE	19
4.6	COUNTRY OF CITIZENSHIP	26
5	DEGREES CONFERRED	31
6	RETENTION AND GRADUATION RATES	35
7	FACULTY AND STAFF	39
7.1	FACULTY HEADCOUNT	40
7.2	FACULTY DEMOGRAPHICS	41
7.4	STAFF HEADCOUNT	44
7.5	STAFF DEMOGRAPHICS	46
8	FINANCIAL AID	49
9	FINANCE	54
10	DEVELOPMENT	55

1 Recruitment and Admissions

DEFINITIONS (Students applying for non-matriculated programs are excluded.)

APPLICANTS: Number of applications received by academic year.

ACCEPTED: Number of applications that were accepted for admission by academic year.

Because the term that this occurs may or not be the same term that the student enrolls, this number can be lower than the number of new registered students.

NEW STUDENTS: Number of students enrolled in their first term by academic year.

Admissions Pipeline, by Academic Year

	Academic Year	Applicants	Accepted	New Students
GSLC	2016	57	36	41
	2017	53	31	37
	2018	48	28	33
	2019	63	27	29
	2020	41	23	21
Los Angeles	2016	1027	793	545
	2017	871	595	533
	2018	754	489	418
	2019	725	457	475
	2020	805	458	507
New England	2016	536	328	312
	2017	520	312	274
	2018	517	310	315
	2019	601	362	322
	2020	716	452	428
Online	2016	82	65	56
	2017	72	44	27
	2018	359	236	150
	2019	258	176	139
	2020	369	253	230
Santa Barbara	2016	326	230	208
	2017	323	231	182
	2018	304	209	182
	2019	283	180	155
	2020	244	141	138
Seattle	2016	409	244	238
	2017	476	278	258
	2018	620	320	286
	2019	702	323	306
	2020	724	344	338

2 Enrollment Data by Campus

2.1 Fall Enrollment Data

DEFINITIONS

FALL TERM: All students who were enrolled during the fall semester or quarter. This includes terms that span two seasons, summer/fall and fall/winter.

HEADCOUNT: Students who are actively working on a degree, certificate or external credential in a program. Headcount is unduplicated by campus. If a student was enrolled at more than one campus in the same academic year, they are counted under both locations. Headcount is also unduplicated by academic level. If a student was enrolled as both an undergraduate and a graduate student in the same academic year, they are counted under both levels.

TERM FTE (full-time equivalent): Undergraduate students are considered Full-Time Equivalent (FTE) if they had 12 or more quarter/semester hours in the term; similarly, graduate students were considered full-time if they attempted 6 or more credit hours. FTE was calculated by dividing the total number of credit hours by 12 (UG) or 6 (GR), following the calculations discussed in the paper “2015-05-20 Rationale and Methodology for Antioch FTE Calculations”. Therefore it is possible for a student to represent more than 1 FTE.

UNIVERSITY TOTAL: Headcount is unduplicated, this is not a sum of the campuses, but rather a true unduplicated headcount of students.

CAMPUS TOTAL: Headcount is unduplicated, this is not a sum of the academic levels within a campus, but rather a true unduplicated headcount of students.

Fall Enrollment by Location

		Fall 2016		Fall 2017		Fall 2018		Fall 2019		Fall 2020	
		HC	FTE	HC	FTE	HC	FTE	HC	FTE	HC	FTE
University Total	BA	644	495	544	425	475	337	477	333	451	337
	MA	1882	2503	1987	2674	2043	2753	2012	2631	2242	2893
	DOC	558	766	543	739	559	769	537	721	535	581
	Total	3084	3765	3074	3838	3077	3860	3024	3685	3228	3811
GSLC	DOC	162	162	158	158	168	168	161	161	157	157
	Total	162	162	158	158	168	168	161	161	157	157
Los Angeles	BA	196	156	194	166	130	100	139	110	126	109
	MA	657	1047	718	1128	736	1125	717	1118	817	1264
	Total	853	1202	912	1294	866	1224	856		943	1373
New England	MA	536	632	556	630	548	617	569	595	223	664
	DOC	227	368	231	358	235	358	231	346	635	344
	Total	763	999	787	987	783	975	800	941	858	1008
Online	BA	165	113	106	72	137	94	177	119	170	124
	MA					8	6	19	17	71	61
	DOC									15	11
	Total	165	113	106	72	145	100	195	136	256	196
Santa Barbara	BA	140	133	115	103	87	68	74	56	62	47
	MA	156	253	185	327	210	371	202	361	185	349
	DOC	64	99	66	103	65	121	60	92	43	86
	Total	360	485	366	533	362	560	335	509	290	482
Seattle	BA	104	63	88	52	82	44	85	48	93	56
	MA	413	439	433	479	463	538	494	531	534	556
	DOC	105	137	88	121	91	123	85	121	97	141
	Total	622	640	609	653	636	704	663	700	724	753

Notes: AY2016-2019 data are as of August 2020, AY2020 data is from the OIE Census Table. Includes the following completion types: degree, certificate, and external credential.

2.2 Annual Enrollment Data

DEFINITIONS

HEADCOUNT: Students who are actively working on a degree or certificate in a program. Headcount is unduplicated by campus. If a student was enrolled at more than one campus in the same academic year, they are counted under both locations. Headcount is also unduplicated by academic level. If a student was enrolled as both an undergraduate and a graduate student in the same academic year, they are counted under both levels.

UNIVERSITY TOTAL: Headcount is unduplicated, this is not a sum of the campuses, but rather a true unduplicated headcount of students.

CAMPUS TOTAL: Headcount is unduplicated, this is not a sum of the academic levels within a campus, but rather a true unduplicated headcount of students.

Annual Enrollment by Location

		AY2016-17	AY2017-18	AY2018-19	AY2019-20	AY2020-21
University Total	BA	901	810	744	728	695
	MA	2575	2688	2759	2805	3090
	DOC	600	600	616	595	613
	Total	4037	4062	4104	4097	4363
GSLC	DOC	170	175	181	180	168
	Total	170	175	181	180	168
Los Angeles	BA	291	308	200	195	189
	MA	907	995	982	1020	1077
	Total	1167	1275	1172	1204	1254
Midwest	BA	56	55	53	11	
	MA	188	149	122	54	2
	Total	239	203	173	64	2
New England	MA	688	733	756	753	896
	DOC	246	255	262	254	251
	Total	932	987	1017	1004	1146
Online	BA	213	154	233	257	253
	MA			13	46	128
	DOC					40
	Total	213	154	244	301	419
Santa Barbara	BA	209	160	130	109	98
	MA	249	258	276	287	266
	DOC	70	73	74	66	49
	Total	522	484	475	454	408
Seattle	BA	138	133	130	160	157
	MA	547	559	618	663	724
	DOC	114	97	99	95	105
	Total	795	784	842	913	978

Notes: AY2016-2019 data are as of August 2020, AY2020 data is from the OIE Census Table. Includes the following completion types: degree, certificate, and external credential.

Annual Enrollment by Program Modality

		AY2016-17	AY2017-18	AY2018-19	AY2019-20	AY2020-21
University Total	All Online	340	355	487	548	718
	Not Online	2994	3014	2978	2977	3099
	Partially Online	709	691	650	596	568
GSLC	Partially Online	170	175	181	180	168
Los Angeles	Not Online	995	1103	1034	1070	1130
	Partially Online	174	166	144	134	125
Midwest	All Online	20	27	27	11	
	Not Online	160	140	118	40	
	Partially Online	65	40	30	13	2
New England	All Online	107	173	214	236	299
	Not Online	577	574	575	567	634
	Partially Online	255	252	235	212	224
Online	All Online	213	155	246	301	419
Santa Barbara	Not Online	492	437	425	411	379
	Partially Online	29	42	49	44	29
Seattle	Not Online	790	786	842	913	978
	Partially Online	5				

Notes: AY2016-2019 data are as of August 2021, AY2020 data is from the OIE Census Table. Includes the following completion types: degree, certificate, and external credential.

3 Enrollment Data by Program

DEFINITIONS

HEADCOUNT (HC): Students who are actively working on a degree or certificate in a program. Headcount is unduplicated by program. If a student was enrolled in more than one program in the same academic year, they are counted under both.

FALL TERM: All students who were enrolled during the fall semester or quarter. This includes terms that span two seasons, summer/fall and fall/winter.

TERM FTE (full-time equivalent): Undergraduate students are considered Full-Time Equivalent (FTE) if they had 12 or more quarter/semester hours in the term; similarly, graduate students were considered full-time if they attempted 6 or more credit hours. FTE was calculated by dividing the total number of credit hours by 12 (UG) or 6 (GR), following the calculations discussed in the paper “2015-05-20 Rationale and Methodology for Antioch FTE Calculations”. Therefore it is possible for a student to represent more than 1 FTE.

Fall Enrollment by Program: Los Angeles

	Fall 2016		Fall 2017		Fall 2018		Fall 2019		Fall 2020	
	HC	FTE	HC	FTE	HC	FTE	HC	FTE	HC	FTE
BA in Applied Arts and Media	6	5	6	6	5	5	7	6	12	11
BA in Applied Studies	11	10	10	9	6	3	2	1	2	2
BA in Liberal Studies	158	122	136	101	113	88	125	102	111	96
BAA in Urban Communities and Justice	1	1	1	1	1	1				
BS in Applied Technology and Business Leadership	7	5	10	8	5	2	2	1	1	1
Certificate in Applied Community Psychology	2	1			1	1				
Certificate in Applied Spatial Analysis for GIS									1	1
Certificate in Clear Credential - Education	28	12	27	14						
Certificate in Teaching Credential, Education	2	5								
Certificate in Web Development	13	12	31	41						
Induction Credential			13	4	43	17	44	15	57	18
MA in Clinical Psychology	399	624	462	730	500	782	500	809	629	1012
MA in Education	12	14	20	29	17	18	13	17	10	15
MA in Education with Teaching Credential	32	67	32	67	31	50	27	53	24	46
MA in Nonprofit Management	34	45	25	33	24	32	14	17	7	9
MA in Psychological Studies			5	8	1	2			1	2
MA in Psychology (Individualized)	9	11	5	5	11	10	7	7	2	2
MA in Urban Sustainability	21	31	20	29	18	24	20	26	8	9
MFA in Creative Writing	118	230	109	203	94	177	93	175	78	151
Post-MFA Certificate in the Teaching of Creative Writing	3	6	2	4	1	2				

Notes: Data are as of August 2021. Includes the following completion types: degree, certificate, and external credential.

Fall Enrollment by Program: Midwest

	Fall 2016		Fall 2017		Fall 2018		Fall 2019	
	HC	FTE	HC	FTE	HC	FTE	HC	FTE
BA in Early Childhood Education	8	8	13	13	9	10		
BA in Health and Wellness	4	2						
BA in Human Services Administration	8	5	8	5	8	4	1	0
BA in Humanities	3	3						
BA in Liberal Studies	6	3	10	6	9	7	1	0
BA in Management	9	9	6	4	3	2		
BS in Applied Technology and Business Leadership	1	1	2	2	6	5		
BS in Healthcare Administration			1	3	3	7		
Certificate in Dyslexia Studies	10	7	15	10	15	11	1	1
Certificate in Reggio Emilia Approach (REA)	6	4	4	2	2	2		
Certificate in Trauma Informed Education					2	3		
MA in Conflict Analysis & Engagement	6	3	1	0			1	0
MA in Conflict Analysis & Resolution	3	2	3	2	1	1		
MA in Individualized Studies	20	14	10	7	5	5	1	1
MA in Individualized Studies: Creative Writing	5	3						
MA in Individualized Studies: Integrative Health Studies	1	1			1	1		
MA in Individualized Studies: Philosophy	3	2						
MA in Management and Change Leadership	17	10	13	7	6	3	2	2
Master of Business Administration					15	17	6	6
MEd in Education	12	19	9	13	9	10		
MEd in Education with Teaching Credential	35	67	33	61	20	42	1	1
Ohio Principal License			2	3				
Teaching Endorsement	1	1	4	3				
Teaching Endorsement - 2nd License	1	1	1	1	1	1		

Notes: Data are as of August 2021. Includes the following completion types: degree, certificate, and external credential.

Fall Enrollment by Program: New England

	Fall 2016		Fall 2017		Fall 2018		Fall 2019		Fall 2020	
	HC	FTE	HC	FTE	HC	FTE	HC	FTE	HC	FTE
Certificate in Applied Behavior Analysis	19	14	2	2						
Certificate in Climate Resilience							3	1	1	1
Certificate in Couple and Family Therapy									2	3
Certificate in Dance/Movement Therapy							5	4	1	0
Certificate in Digital Learning Specialist					1	1	1	1		
Certificate in Dyslexia Studies							6	4	4	3
Certificate in Environmental and Sustainability Education			14	28	12	24	13	25	1	1
Certificate in Environmental Studies			1	1	1	1	3	2	2	1
Certificate in Humane Education									1	1
Certificate in Library Media Specialist			1	1	1	0	2	1	3	2
Certificate in Mindfulness for Educators	4	2	3	2	1	1	4	2	5	3
Certificate in Nature Based Early Childhood Education	7	3	7	3	8	3	8	3	8	3
Certificate in Reggio Emilia Approach (REA)							2	2	3	3
Certificate in Sustainable Business			1	1						
Certificate in Trauma Informed Education							5	4	3	3
Certificate in Waldorf Education	9	10	15	11	10	7	6	4	2	1
MA in Clinical Mental Health Counseling	146	171	185	220	217	237	236	242	270	283
MA in Couple and Family Therapy									15	19
MA in Dance Movement Therapy: Couple and Family Therapy									15	27
MA in Dance Movement Therapy: Marriage and Family Therapy							7	15	8	17
MA in Dance/Movement Therapy and Counseling	27	47	26	39	23	37	15	23	10	10
MA in Humane Education									19	15
MA in Interdisciplinary Studies	3	3	7	6	6	5	5	5	2	2
MA in Marriage and Family Therapy	12	22	20	35	19	32	21	28	20	27
MBA in Sustainability	15	26	8	13	4	7				
MEd for Experienced Educators	45	40	38	33	36	31	57	52	52	49
MEd for Integrated Day	2	3								

MEd for Integrated Learning	21	38	7	11						
MEd Foundations of Education							1	1		
MEd in Education with Teacher Certification	1	2	6	11	18	33	9	13	7	11
MEd in Humane Education									10	9
MEd in Waldorf Education	51	41	50	37	47	38	28	17	38	32
MS in Applied Behavior Analysis	29	20	39	28	25	23	14	13	7	4
MS in Environmental Studies	139	168	119	129	101	113	96	115	98	113
MS in Resource Management & Conservation			1	2	1	2	1	1		
MS in Resource Management and Administration							3	5	12	14
MS in Resource Management and Conservation	5	5	3	3	6	7	5	6	3	4
PhD in Couple and Family Therapy									13	28
PhD in Environmental Studies	69	60	74	63	73	56	71	53	65	52
PhD in Marriage and Family Therapy	20	32	22	29	28	37	34	46	29	38
Post-Master's Certificate in Clinical Mental Health Counseling	2	2	3	2	7	4	7	6	12	9
Post-Master's Cert in Counseling Military Personnel & Families							1	1		
Post-Master's Cert in Respecialization Marriage & Family Therapy	1	1			2	3	1	2		
Post-Master's Principal Cert in Ed Leadership & Admin			2	1	3	2	3	2	2	1
PsyD in Clinical Psychology	138	273	135	266	134	262	128	248	117	227

Notes: Data are as of August 2021. Includes the following completion types: degree, certificate, and external credential.

Fall Enrollment by Program: Online

	Fall 2016		Fall 2017		Fall 2018		Fall 2019		Fall 2020	
	HC	FTE	HC	FTE	HC	FTE	HC	FTE	HC	FTE
BA in Applied Studies	1	1			3	3	3	2	6	3
BA in Human Development	1	0	2	2	18	14	32	23	44	35
BA in Human Services Administration	51	37	21	11	18	10	21	14	15	11
BA in Humanities & Creative Writing	1	1	1	1						
BA in Liberal Studies	80	51	64	45	74	47	87	57	70	53
BA in Management	25	15	18	12	18	8	25	18	24	16
BA in Management-Data Analytics Focus	5	3								
BS in Applied Technology and Business Leadership	1	1	1	1	7	4	6	5	9	6
BS in Healthcare Administration							2	2	1	1
EdD in Educational and Professional Practice									15	11
MA in Individualized Studies									12	10
MA in Individualized Studies in Humanities									7	6
MA in Individualized Studies in Social Science									4	3
Master of Business Administration					1	2	1	2	29	26
Master of Human Services Administration					8	6	18	16	19	18

Notes: Data are as of August 2021. Includes the following completion types: degree, certificate, and external credential.

Fall Enrollment by Program: Santa Barbara

	Fall 2016		Fall 2017		Fall 2018		Fall 2019		Fall 2020	
	HC	FTE	HC	FTE	HC	FTE	HC	FTE	HC	FTE
BA in Applied Studies							1	1		
BA in Liberal Studies	142	133	115	103	87	67	62	45	39	29
BA in Management							1	1	6	5
BA in Psychology							10	9	17	14
Certificate in Clear Credential - Education	5	2								
Certificate in Nature Based Early Childhood Education	2	1	3	2	2	0	1	0		
Induction Credential			2	1	6	3	5	2		
MA in Clinical Psychology	93	156	113	206	128	222	126	226	148	283
MA in Education	10	10	7	9	11	17	13	24	2	2
MA in Education with Teaching Credential	9	15	8	23	10	23	8	14	1	1
MA in Psychology (Non-Clinical)	8	13	8	10	2	3	2	4	2	4
Master of Business Administration	19	26	21	27	24	33	23	32	12	15
MEd in Education with Teaching Credential	10	30	7	15	9	31	9	35	8	24
MFA in Writing & Contemporary Media			16	30	18	36	13	23	8	15
MFA in Writing & Contemporary Media: Playwriting Genre									1	2
MFA in Writing & Contemporary Media: TV/Screenwriting Genre							1	2	2	4
PsyD in Clinical Psychology	64	99	66	103	65	120	60	92	43	86

Notes: Data are as of August 2021. Includes the following completion types: degree, certificate, and external credential.

Fall Enrollment by Program: Seattle

	Fall 2016		Fall 2017		Fall 2018		Fall 2019		Fall 2020	
	HC	FTE	HC	FTE	HC	FTE	HC	FTE	HC	FTE
BA in Health Counseling and Psychology	1	1	9	5	13	7	20	13	29	20
BA in Liberal Studies	97	59	76	44	45	24	42	26	46	27
Certificate in Addiction Studies									1	1
Certificate in Culturally Responsive Early Childhood Education					24	12	20	10	19	10
Certificate in Sex Therapy							1	0	7	4
Certificate in Sexuality Education									5	3
Certificate in Teaching									3	3
Da Vinci High Program	6	3	3	2						
English Language Learner Endorsement							4	2		
Library Media (Pathway 3)	7	4	5	3						
MA in Clinical Mental Health Counseling	184	188	188	187	190	195	203	211	220	229
MA in Communication	1	1								
MA in Education	42	42	44	66	34	44	29	35	20	24
MA in Environment & Community	1	1								
MA in Marriage and Family Therapy	130	135	157	165	170	191	192	192	197	202
MA in Organizational Development	1	1								
MA in Psychology	5	4	3	3	2	2	3	2	3	2
MA in Teaching	31	56	29	50	50	91	44	79	55	75
MA in Whole Systems Design	1	1								
PhD in Counselor Education and Supervision	7	7	8	9	15	14	12	10	18	15
Post Master's Certificate in Play Therapy	10	5	3	2	9	5	9	5	8	5
PsyD in Clinical Psychology	98	130	80	112	76	106	74	111	80	126
Teaching Endorsement			4	2	8	5	11	5	14	10

Notes: Data are as of August 2021. Includes the following completion types: degree, certificate, and external credential.

4 Student Demographics

4.1 Gender

Gender by Academic Year

		AY2016-17	AY2017-18	AY2018-19	AY2019-20	AY2020-21
University Total	Female	3072	3030	3096	3142	3359
	Male	921	956	943	935	985
	Unknown	33	56	53	49	50
GSLC	Female	122	125	130	133	133
	Male	43	45	46	43	32
	Unknown	5	5	5	4	3
Los Angeles	Female	813	841	824	865	888
	Male	333	388	316	324	351
	Unknown	21	37	37	27	41
Midwest	Female	192	154	114	53	2
	Male	51	48	57	11	
New England	Female	756	810	815	805	924
	Male	175	177	200	202	224
	Unknown	3	2	2	2	4
Online	Female	184	131	191	225	305
	Male	29	24	55	76	114
Santa Barbara	Female	366	341	351	334	311
	Male	154	137	121	126	98
Seattle	Female	652	636	683	746	808
	Male	139	138	150	158	167
	Unknown	4	12	9	16	3

Notes: AY2016-2019 data are as of August 2020, AY2020 data is from the OIE Census Table. Includes the following completion types: degree, certificate, and external credential.

4.2 Race/Ethnicity

Race/Ethnicity by Academic Year

		AY2016-17	AY2017-18	AY2018-19	AY2019-20	AY2020-21
University Total	American/Alaskan Native	20	22	22	18	8
	Asian	105	113	102	119	148
	Black or African American	337	346	321	285	271
	Hawaiian/Pacific Islander	9	9	9	6	6
	Hispanic/Latino	471	484	463	473	492
	Non Resident Alien	161	123	122	111	93
	Other/Unknown	564	587	642	762	844
	Two or More Races	136	130	135	130	153
	White	2223	2228	2276	2222	2379
GSLC	American/Alaskan Native	2	1	1	1	
	Asian		1			2
	Black or African American	39	41	46	44	41
	Hispanic/Latino	9	7	11	11	10
	Non Resident Alien	4	5	7	7	8
	Other/Unknown	45	44	34	29	28
	Two or More Races					1
	White	71	76	82	88	78
Los Angeles	American/Alaskan Native	5	5	4	2	
	Asian	47	51	39	44	52
	Black or African American	127	144	105	92	76
	Hawaiian/Pacific Islander	3	3	3	1	1
	Hispanic/Latino	192	221	184	177	186
	Non Resident Alien	36	29	23	18	17
	Other/Unknown	182	197	208	243	272
	Two or More Races	54	50	48	48	56
	White	521	566	563	591	620
Midwest	Asian	3	6	5	1	
	Black or African American	52	47	33	8	
	Hawaiian/Pacific Islander		1	2	1	
	Hispanic/Latino	7	5	4	2	
	Non Resident Alien	3	2		1	
	Other/Unknown	14	14	10	4	
	Two or More Races	2	2	2		
	White	162	125	115	47	2

Notes: AY2016-2019 data are as of August 2020, AY2020 data is from the OIE Census Table. Includes the following completion types: degree, certificate, and external credential.

Race/Ethnicity by Academic Year Cont.

		AY2016-17	AY2017-18	AY2018-19	AY2019-20	AY2020-21
New England	American/Alaskan Native	8	10	8	4	3
	Asian	18	18	20	24	32
	Black or African American	34	34	34	39	45
	Hawaiian/Pacific Islander	3	3	2	1	1
	Hispanic/Latino	36	44	48	54	68
	Non Resident Alien	40	34	37	29	28
	Other/Unknown	153	153	162	195	236
	Two or More Races	17	23	27	22	27
	White	625	670	679	641	712
Online	American/Alaskan Native			3	3	2
	Asian	1	1	4	3	12
	Black or African American	32	21	47	58	62
	Hawaiian/Pacific Islander	1		1	1	1
	Hispanic/Latino	9	7	25	30	47
	Non Resident Alien			1	4	6
	Other/Unknown	33	24	43	64	79
	Two or More Races	9	9	12	11	15
	White	128	93	110	127	195
Santa Barbara	American/Alaskan Native		1	1	4	2
	Asian	9	6	4	5	6
	Black or African American	17	17	16	10	9
	Hawaiian/Pacific Islander	2	2	1	1	1
	Hispanic/Latino	166	140	125	114	109
	Non Resident Alien	59	39	35	36	21
	Other/Unknown	29	43	50	63	52
	Two or More Races	15	15	12	14	17
	White	223	215	228	213	192
Seattle	American/Alaskan Native	5	5	5	4	1
	Asian	27	31	30	42	46
	Black or African American	38	42	42	39	40
	Hawaiian/Pacific Islander				1	2
	Hispanic/Latino	56	60	69	87	74
	Non Resident Alien	20	15	19	16	13
	Other/Unknown	108	114	135	165	180
	Two or More Races	39	31	36	35	37
	White	502	488	506	531	585

Notes: AY2016-2019 data are as of August 2020, AY2020 data is from the OIE Census Table. Includes the following completion types: degree, certificate, and external credential.

4.4 State of Residence

State of Residence by Academic Year Graduate School of Leadership & Change

	AY2016-17	AY2017-18	AY2018-19	AY2019-20	AY2020-21
Alabama	1	1	1	1	1
Alaska		1	1	1	1
Arizona	3	4	5	2	3
California	22	21	19	19	22
Colorado	3	3	2	4	5
Connecticut	1	2	4	4	3
Delaware	1	1	1	1	1
District Of Columbia	1	1	1	1	
Florida	7	8	8	9	6
Georgia	8	6	5	5	4
Hawaii					1
Idaho	1	1			
Illinois	1	1	1	3	3
Indiana	1	2	1	3	3
Kansas		1	1	1	1
Maryland	5	5	5	4	3
Massachusetts	10	10	10	11	12
Michigan	4	3	2	2	1
Minnesota	3	2	4	4	3
Mississippi		1	1	1	1
Missouri					1
Nebraska				1	1
Nevada	1	1	1	1	1
New Hampshire	2	1	1	2	2
New Jersey	2	2	2	3	2
New Mexico			1	1	1
New York	5	6	8	7	7
North Carolina	6	5	5	2	3
Ohio	34	34	37	34	26
Oklahoma					1
Oregon	4	3	2	2	1
Pennsylvania	1	3	4	4	3
Rhode Island	3	3	2	2	2
South Carolina		1	2	1	2
South Dakota		1	1	1	1
Tennessee	2				
Texas	3	4	4	4	6
Utah	2	2	2	2	1

Vermont	3	3	4	6	5
Virginia	10	11	11	10	9
Washington	12	14	14	13	14

State of Residence by Academic Year

Los Angeles

	AY2016-17	AY2017-18	AY2018-19	AY2019-20	AY2020-21
Alaska	1	1			1
Arizona	5	5	3	3	2
Arkansas		1		1	1
California	1070	1176	1107	1151	964
Colorado	2	2	2	4	4
Connecticut	1	1	1	2	1
District Of Columbia	1	2			
Florida	5	4	3	2	3
Georgia	2	5	3	3	2
Hawaii		1			
Idaho	1	1		1	2
Illinois	3	5	6	7	2
Indiana	1	1	1		
Iowa	1	1	1		
Kansas		1	1	1	
Kentucky			1	1	1
Louisiana	1				
Maryland		2	2	1	2
Massachusetts	2	3	2	1	
Michigan	2		2	1	1
Minnesota	3	2			
Missouri			1		1
Montana	1	1	1	1	
Nevada	2	4	3	1	1
New Hampshire	1	1			
New Jersey	2	2	1	2	2
New Mexico	2	1	1	2	2
New York	7	3	3	2	3
North Carolina	1			1	1
Ohio	4	8	5	5	1
Oklahoma	1		2	1	2
Oregon	6	5	6	3	4
Pennsylvania	2	2			
Puerto Rico	1				
South Carolina	1		1	1	2

Tennessee	1	1	1		
Texas	4	6	6	6	8
Utah	1	1	1		
Virginia	2	4	2	2	2
Washington	17	9	5	5	5
Wisconsin		1	2	2	1
Wyoming	1	1			

State of Residence by Academic Year

New England

	AY2016-17	AY2017-18	AY2018-19	AY2019-20	AY2020-21
Alabama			3	1	3
Alaska	3	18	11	5	2
Alberta	2				1
Arizona	7	9	9	10	7
Arkansas	3	4	3		
California	19	22	22	34	41
Colorado	15	19	21	16	18
Connecticut	40	35	35	35	40
Delaware	3	3	3	4	5
District Of Columbia	4	5	4	3	3
Florida	14	16	21	22	19
Georgia	12	18	12	11	11
Hawaii	3	6	7	6	6
Idaho	3	4	5	7	8
Illinois	9	8	6	11	17
Indiana	2	4	4	5	5
Iowa	3	3	3	1	1
Kansas	2	2	3	2	3
Kentucky	3	4	6	6	6
Louisiana	5	4	5	5	2
Maine	26	30	33	26	21
Maryland	7	5	6	12	13
Massachusetts	135	130	131	115	119
Michigan	10	9	7	12	13
Minnesota	18	24	22	12	12
Mississippi	1	1	1	4	3
Missouri	2	4	4	4	5
Montana	1			1	1
Nebraska	4	5	3	3	3
Nevada	2	3	5	5	4
New Hampshire	238	224	220	212	172
New Jersey	14	16	22	21	18

New Mexico	2	8	9	11	6
New York	62	59	56	61	61
North Carolina	8	14	21	23	21
North Dakota	2	2	1	1	
Ohio	14	23	27	35	31
Oregon	10	13	19	18	25
Pennsylvania	26	25	24	26	30
Puerto Rico		1	1		1
Rhode Island	7	9	11	9	10
South Carolina	5	3	5	6	5
South Dakota	3	3	2	1	
Tennessee	3	6	5	5	6
Texas	12	14	19	18	23
Utah	6	7	5	8	5
Vermont	88	76	72	65	70
Virginia	12	14	15	15	15
Washington	38	45	58	64	71
West Virginia	1	1			
Wisconsin	6	12	11	11	11
Wyoming	2	3	1	2	3

State of Residence by Academic Year

Online

	AY2016-17	AY2017-18	AY2018-19	AY2019-20	AY2020-21
Alabama	2		2	1	1
Arizona	4	1	1	1	1
Arkansas	2	1	2	1	1
California	55	52	78	90	98
Colorado	6	3	8	8	4
Connecticut	2	1		1	1
Delaware				1	1
District Of Columbia	1	1	1		1
Florida	9	6	3	3	8
Georgia	2	2	2	3	3
Hawaii		1	1	1	
Idaho	1			3	2
Illinois	6	3	5	3	1
Indiana	3	1	2	3	5
Kansas				2	1
Kentucky	2		2	1	1
Louisiana	2	1	1		

Maine	1	1	2	1	1
Maryland			1	2	1
Massachusetts		1	2	3	4
Michigan	6	2	3	3	2
Minnesota	1	1	1	1	1
Mississippi	3	2	8	10	3
Missouri	1	1	3	3	2
Montana			1	1	2
Nebraska			1	1	1
Nevada	2	3	3	3	1
New Hampshire			2	4	6
New Jersey	2	1	2	1	2
New Mexico	2		1	2	2
New York	4	4	10	5	4
North Carolina	1	2	4	4	7
North Dakota				1	
Ohio	32	29	40	51	58
Oklahoma	3	3	1	2	2
Oregon		2	3	7	5
Pennsylvania	2	1	3	4	3
Rhode Island				1	1
South Carolina	2	1	2	1	1
South Dakota					1
Tennessee	4	2			1
Texas	17	9	8	8	4
Utah	1				1
Vermont			2	5	3
Virginia	5	5	4	4	3
Washington	20	11	23	29	33
Wisconsin	2		5	3	2

**State of Residence by Academic Year
Santa Barbara**

	AY2016-17	AY2017-18	AY2018-19	AY2019-20	AY2020-21
Arizona	2	3	2		
California	496	450	447	435	315
Colorado	2	2			2
Connecticut	1	1			
Florida	1	1	2	2	1
Idaho	2	2	2		
Illinois			1	2	2
Massachusetts			1	1	1

Minnesota	1	1			
Missouri				1	
Montana		1	2	1	2
Nevada	1		2	3	3
New Jersey		1	2	1	
New Mexico		1	1	1	
New York		1			2
North Carolina	1				
Ohio	2	3	4	3	2
Oregon	1	1		1	1
Texas	1	1			
Utah	1	1			
Virginia				1	1
Washington	3	2	2	2	1
Wisconsin		1	1	1	

State of Residence by Academic Year

Seattle

	AY2016-17	AY2017-18	AY2018-19	AY2019-20	AY2020-21
Arizona	2	1			2
California	13	9	8	6	21
Colorado				1	9
Connecticut	1				1
Florida				1	
Georgia	1	2	1		
Hawaii	1	1		1	4
Idaho	1	1			4
Illinois	2	1	1	3	6
Indiana					2
Iowa	1	1			1
Kentucky					1
Louisiana	1	1			2
Maine			1	1	
Maryland					2
Massachusetts	1	1			1
Minnesota	2	2	2	1	6
Missouri	1	1	2	2	
Montana	1	1	1	1	2
Nebraska	1	1	1	1	2
Nevada			1	1	
New Hampshire	2	1	1	1	2
New Jersey	1		1		3
New Mexico				1	3

New York	3	2	3	7	4
North Carolina					1
North Dakota	1				
Ohio			1	1	2
Oklahoma	1	1	1	1	1
Oregon	9	8	8	21	26
Pennsylvania	2	1			
South Dakota				1	1
Tennessee					1
Texas	2	1	2	7	5
Utah	2	2	3	6	3
Vermont	1	1			
Virginia	1	2	3	3	3
Washington	731	737	793	1709	1650
Wisconsin					1

4.6 Country of Citizenship (OUTSIDE THE US)

**Country of Citizenships by Academic Year
Graduate School of Leadership & Change**

	AY2016-17	AY2017-18	AY2018-19	AY2019-20	AY2020-21
Canada	1	1	1	1	1
Chile	1	1	1	1	
China	1	1	1	1	1
Ghana		1	1	1	1
Hong Kong		1	1	1	1
Nigeria					1
Senegal			1		1
South Africa				1	1
Tonga	1	1	1	1	1
Uganda			1	1	1

**Country of Citizenships by Academic Year
Los Angeles**

	AY2016-17	AY2017-18	AY2018-19	AY2019-20	AY2020-21
Armenia	1				
Bulgaria		1	1		
Canada	8	7	4	4	2
China	1	1	1	2	2
Colombia	1	1	1	1	
Cote D'ivoire				1	1
Cuba	1				
Cyprus			1	1	1
Czech Republic	1				
Denmark					1
El Salvador		1	1		
Finland	1				
France	1	3	3		
Georgia	1				
Germany	6	5	1	2	2
Guatemala		1			
Hong Kong	1	1			
India	1	2	1		
Iran (Islamic Republic Of)	4	6	4	1	2
Ireland	1	1			
Israel	1	1	1	1	
Italy			1	1	1
Japan	1			1	
Korea, Republic Of	1	1	1		
Lebanon	1	1	1	1	

Mexico	3	4	5	2	1
Norway	1	1			1
Pakistan		1	1		
Peru			1	1	1
Philippines	2				
Russian Federation	1	1	1		
Saudi Arabia	1	1	1		
Spain			1	1	1
Sri Lanka	2	2	1		
Sweden		1	2	2	2
Taiwan	1	1	1		
Trinidad And Tobago	2	2			
Turkey	1	2	2		
Ukraine		1	1		
United Kingdom	5	3	1		
Venezuela		2	1	2	1
Viet Nam				1	
Zimbabwe	1	1			

Country of Citizenships by Academic Year

New England

	AY2016-17	AY2017-18	AY2018-19	AY2019-20	AY2020-21
Argentina	1				
Australia	1	1	1		
Austria			2	2	1
Bhutan		1			
Brazil	3	4	4	3	3
Cameroon			1	1	1
Canada	12	10	4	4	6
China	6	4	3	2	3
Egypt					1
France	2	2	2		
Germany	3	2	1	1	1
Ghana	5	4	4	2	
India	1	1	4	4	2
Iran (Islamic Republic Of)	1				
Israel			1	1	
Italy	2	2	1		
Japan	1	1	2	2	2
Korea, Republic Of	1	1	2	2	2
Liberia		1			
Malawi	2	1	1		
Mexico	1		1	1	2

Mongolia	1	1	1	1	1
New Zealand		1	1	1	1
Nicaragua		1	1	1	1
Niger			1	1	1
Nigeria	3	3	2	1	3
Philippines	1	1	1	1	1
Portugal		1	1		
Rwanda	4	4	3	2	1
Singapore			2	2	1
Spain			1	1	1
Sudan	1				
Taiwan				1	1
Uganda			1	1	1
United Kingdom	1		3	3	2
Viet Nam		1	1	1	1

Country of Citizenships by Academic Year

Online

	AY2016-17	AY2017-18	AY2018-19	AY2019-20	AY2020-21
Canada				1	4
Georgia				1	1
Russian Federation				1	
Slovenia				1	1
Sri Lanka		1	1		
United Kingdom			1	1	1

Country of Citizenships by Academic Year

Santa Barbara

	AY2016-17	AY2017-18	AY2018-19	AY2019-20	AY2020-21
Argentina				1	1
Brazil		1	1	1	
Canada			2	2	2
China		1			
Czech Republic	1				
Ecuador			1	1	1
France	4	1		1	1
Germany		1	2	2	1
Greece	1				
Hong Kong	2	2			
India	1	3	1	1	
Iran (Islamic Republic Of)				1	
Ireland	1		1	1	
Israel	1	1	1	1	

Italy	1	2	2	1	
Mexico	3	4	3	2	1
Morocco				1	
Netherlands			1	1	
Norway	20	11	6	4	4
Portugal	1				
Russian Federation				1	
Saudi Arabia	1	1			
Sri Lanka			1	1	
Sweden	24	14	14	8	6
Taiwan	1				
Tunisia	1	1			
Turkey			1		
Ukraine				2	1
United Kingdom				3	3
Viet Nam			1	1	

Country of Citizenships by Academic Year

Seattle

	AY2016-17	AY2017-18	AY2018-19	AY2019-20	AY2020-21
Andorra			1	1	
Belarus	1	1	1		
Brazil	2	2	2		
Canada	10	9	11	10	6
Chile				1	1
China				1	3
Colombia	1	1	1	1	1
Dominican Republic	1	1	1		
Egypt	1	1			
Germany	1				
Hong Kong	1				
India					1
Indonesia	1	1			
Israel		1	1	1	1
Italy	2	2	2	1	1
Japan	1	1	1	1	
Korea, Republic Of	1	1	1	1	1
Liberia	1	1	1		
Mexico	1	2	2	3	1
Nigeria		1	1		
Pakistan	1		1	1	
Russian Federation		1	1	1	1
Rwanda			1		

Taiwan		1	1	1	
United Kingdom	3	2			
Viet Nam	1	1	2	1	1

5 Degrees Conferred

Degrees Conferred by Program: Los Angeles

	AY2016-17	AY2017-18	AY2018-19	AY2019-20
BA in Applied Arts and Media		1	2	1
BA in Applied Studies		2	3	
BA in Liberal Studies	45	52	40	44
BS in Applied Technology and Business Leadership		5	4	
Certificate in Clear Credential - Education	26	25		
Certificate in Teaching Credential, Education	2			
Certificate in Teaching Credential: Preliminary		1		
Certificate in Urban Sustainability				1
Certificate in Web Development	23	57	4	
MA in Clinical Psychology	140	137	178	190
MA in Education	11	12	17	15
MA in Education with Teaching Credential	4	7	7	14
MA in Nonprofit Management	12	22	16	7
MA in Psychological Studies		3	1	
MA in Psychology (Individualized)	4	6	4	7
MA in Urban Sustainability	6	11	7	5
MFA in Creative Writing	54	55	33	43
Post-MFA Certificate in the Teaching of Creative Writing	6	8	5	1
Teaching Credential	1	5		
CAMPUS TOTAL	334	409	321	328

Notes: Data are as of August 2021.

Degrees Conferred by Program: GSLC

	AY2016-17	AY2017-18	AY2018-19	AY2019-20
MA in Leadership and Change	14	17	21	24
MA in Leadership and Change for Healthcare		2	4	3
PhD in Leadership and Change	15	13	11	30
CAMPUS TOTAL	29	32	36	57

Notes: Data are as of August 2021.

Degrees Conferred by Program: New England

	AY2016-17	AY2017-18	AY2018-19	AY2019-20
Certificate in Applied Behavior Analysis	4		1	1
Certificate in Autism Spectrum Disorders	1			
Certificate in Climate Resilience				1
Certificate in Dyslexia Studies				3
Certificate in Environmental and Sustainability Education		15	13	11
Certificate in Environmental Studies		5	13	15
Certificate in Mindfulness for Educators	3	2	4	4
Certificate in Nature Based Early Childhood Education	3	6	8	5
Certificate in Sustainable Business		6	3	
Certificate in Trauma Informed Education				3
Certificate in Waldorf Education	6	18	23	29
MA in Clinical Mental Health Counseling	16	24	47	43
MA in Dance/Movement Therapy and Counseling	7	11	6	6
MA in Interdisciplinary Studies		3	2	6
MA in Marriage and Family Therapy	5	6	10	4
MBA in Sustainability	11	4	4	
MEd for Experienced Educators	20	20	18	24
MEd for Integrated Day	2			
MEd for Integrated Learning	13	7		
MEd in Education with Teacher Certification	1		5	11
MEd in Waldorf Education	12	20	18	6
MS in Applied Behavior Analysis	11	19	11	6
MS in Clinical Psychology	33	19	19	18
MS in Environmental Studies	34	37	56	40
MS in Interdisciplinary Environmental Studies			40	9
MS in Resource Management & Conservation				1
MS in Resource Management and Conservation	3	1	2	1
PhD in Environmental Studies	9	4	10	9
PhD in Marriage and Family Therapy	1			3
Post-Master's Certificate in Clinical Mental Health Counseling	2		2	4
Post-Master's Certificate in Counseling Military & Families		2	1	1
Post-Master's Cert in Marriage & Family Therapy	2	1		2
Post-Master's Principal Certificate in Ed Leadership & Admin	4		2	3
PsyD in Clinical Psychology	9	26	26	25
CAMPUS TOTAL	212	256	344	294

Notes: Data are as of August 2021.

Degrees Conferred by Program: Online

	AY2016-17	AY2017-18	AY2018-19	AY2019-20
BA in Applied Studies				1
BA in Human Development				6
BA in Human Services Administration	23	12	6	5
BA in Humanities & Creative Writing		1		
BA in Liberal Studies	18	33	24	23
BA in Management	12	12	2	8
BS in Applied Technology and Business Leadership	1			2
CAMPUS TOTAL	54	58	32	45

Notes: Data are as of August 2021.

Degrees Conferred by Program: Santa Barbara

	AY2016-17	AY2017-18	AY2018-19	AY2019-20
BA in Liberal Studies	84	65	51	32
BA in Psychology				1
Certificate in Clear Credential - Education		1		
Certificate in Nature Based Early Childhood Education		1	2	3
Certificate in Somatic Psychotherapy		7		
MA in Clinical Psychology	48	32	50	49
MA in Education	6	5	7	6
MA in Education with Teaching Credential	1	4	3	4
MA in Psychology	9	2	6	7
MA in Psychology (Non-Clinical)	5	7	1	3
Master of Business Administration	9	7	12	10
MEd in Education with Teaching Credential	4	6	3	8
MFA in Writing & Contemporary Media			10	7
PsyD in Clinical Psychology	11	9	16	7
Teaching Credential	1	4	1	4
CAMPUS TOTAL	178	150	162	141

Notes: Data are as of August 2021.

Degrees Conferred by Program: Seattle

	AY2016-17	AY2017-18	AY2018-19	AY2019-20
BA in Health Counseling and Psychology				1
BA in Liberal Studies	33	28	24	16
Certificate in Addiction Studies		7	7	4
Certificate in Culturally Responsive Early Childhood Ed		15	31	54
Certificate in Sex Therapy				7
Certificate in Sexuality Education				1
Da Vinci High Program	3	2		
MA in Clinical Mental Health Counseling	35	44	46	38
MA in Communication	1			
MA in Couple and Family Therapy	34	30	33	37
MA in Education	28	20	24	26
MA in Environment & Community	1			
MA in Organizational Development	2			
MA in Psychology	11	9	11	9
MA in Teaching	21	9	21	32
MA in Whole Systems Design	1			
PhD in Counselor Education and Supervision				2
Post Master's Certificate in Play Therapy	8	15	11	13
PsyD in Clinical Psychology	22	12	15	10
Teaching Endorsement	1		1	
CAMPUS TOTAL	201	191	224	250

Notes: Data are as of August 2021.

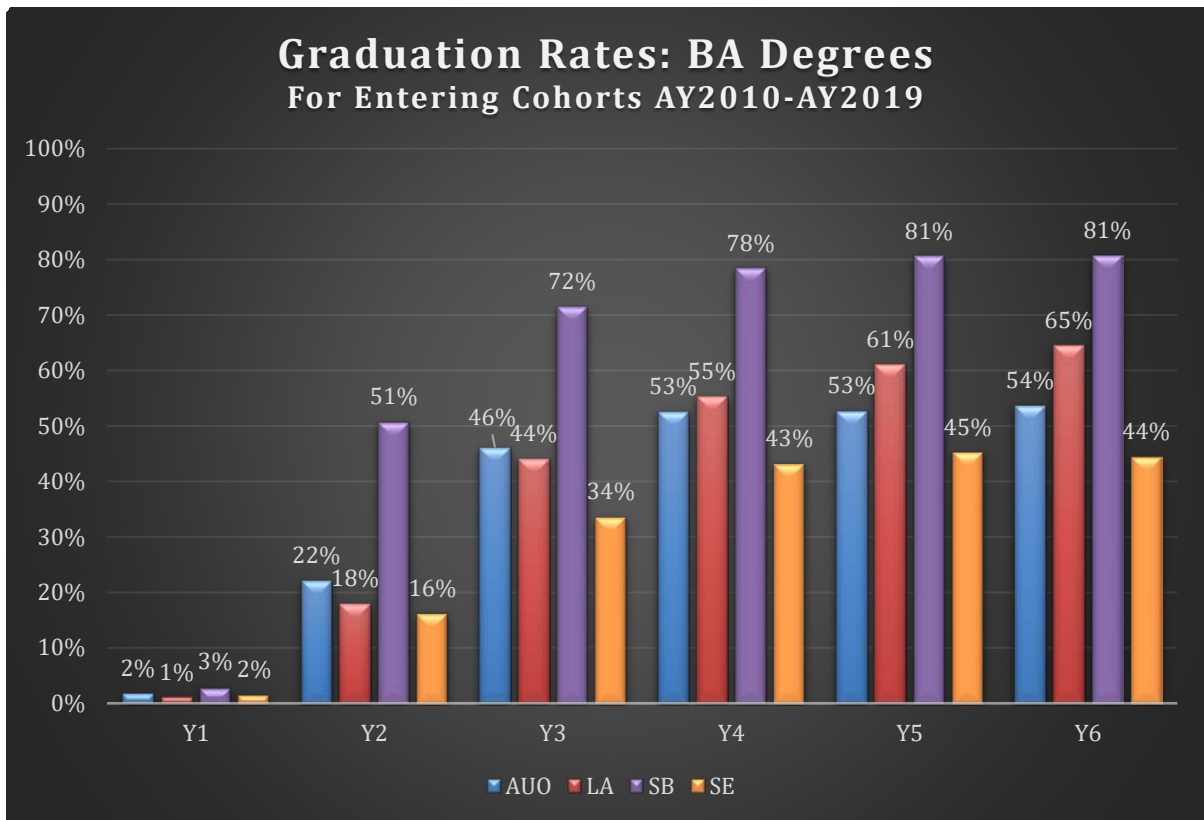
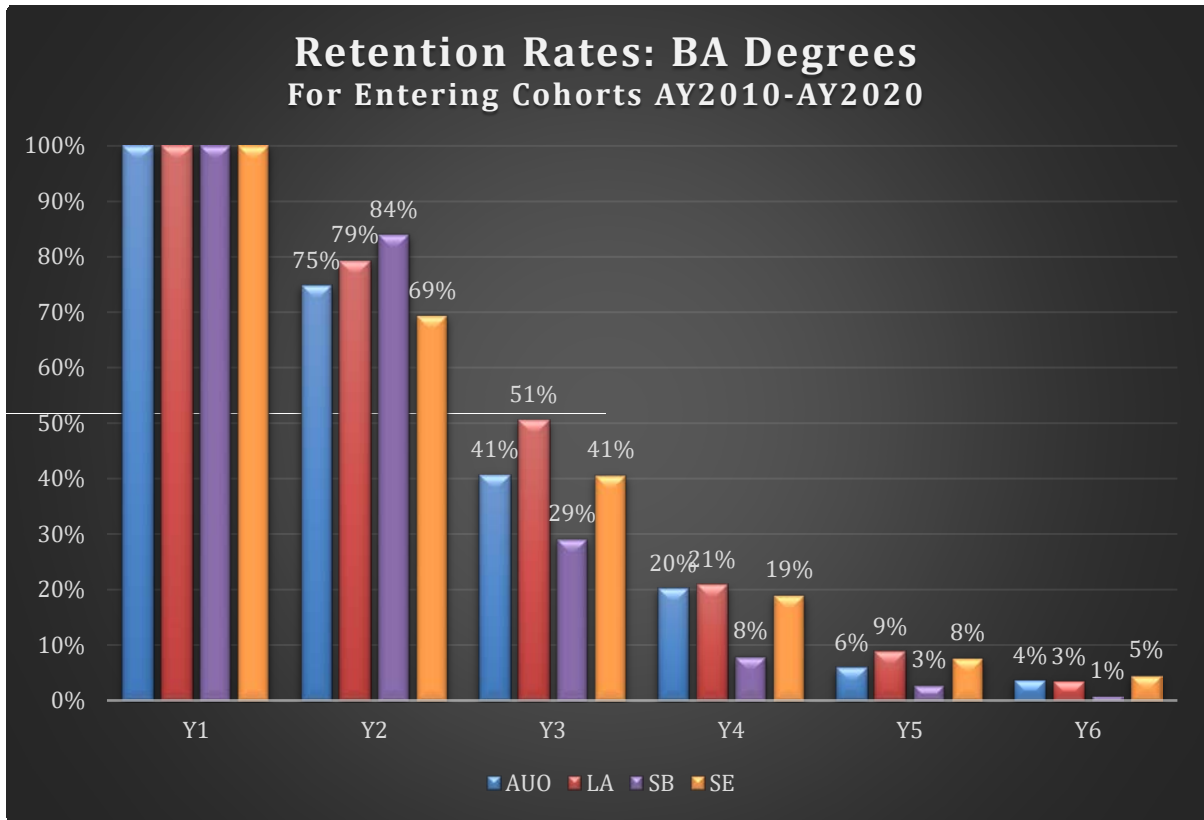
6 Retention and Graduation Rates

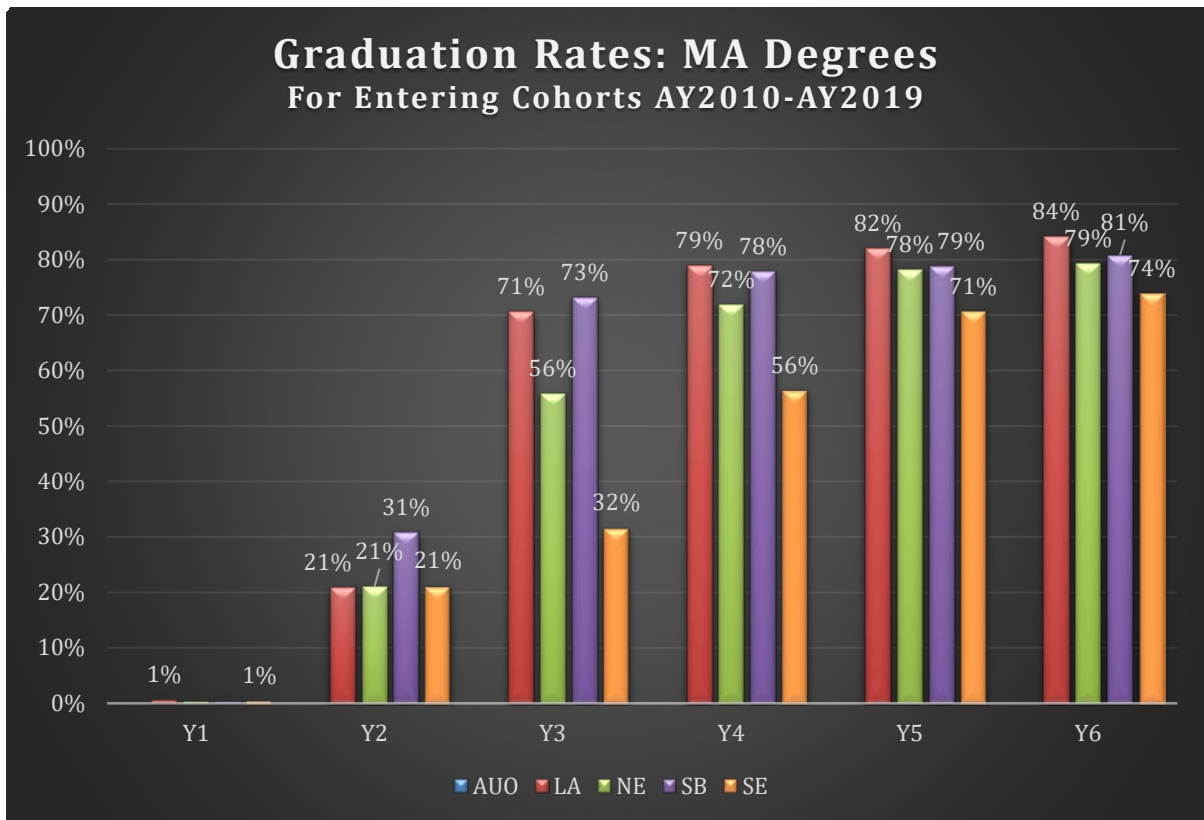
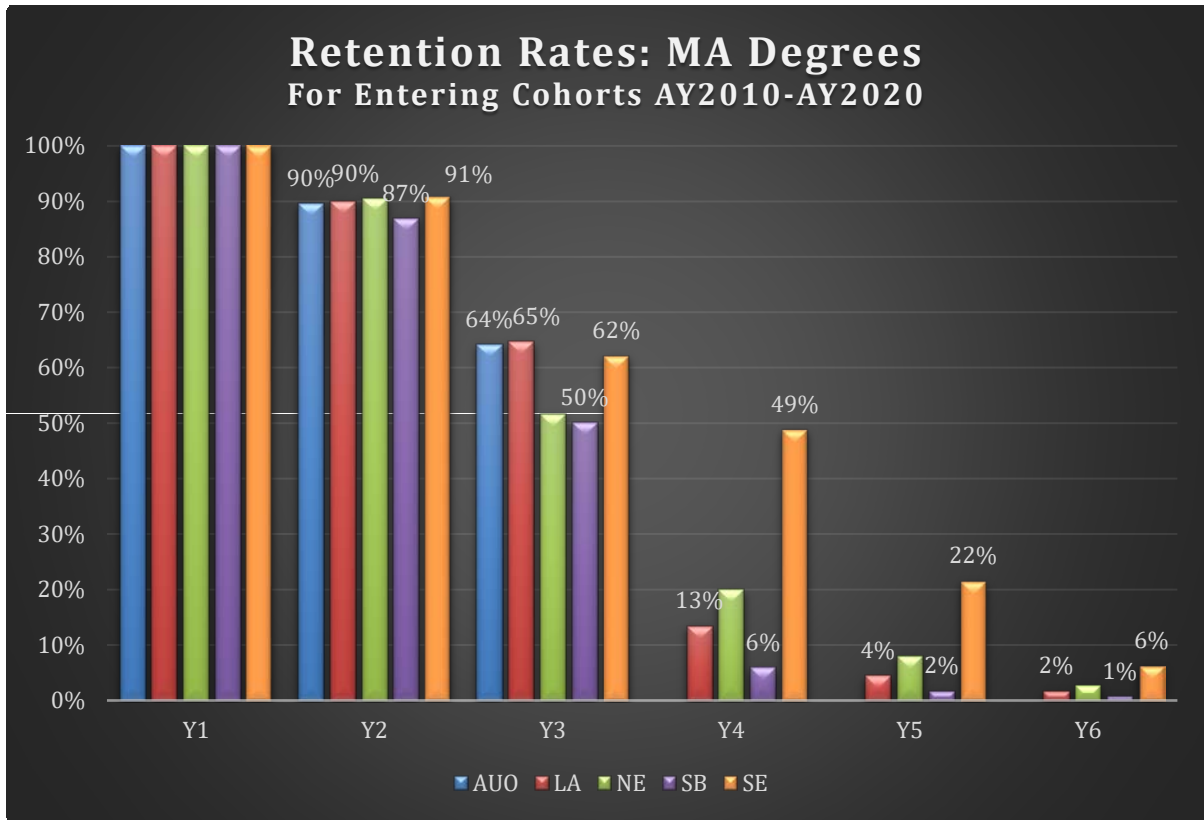
Retention and graduation data only include degree programs, non-degree programs are not included. Data are based on headcounts, whether the student is full-time or part-time is not taken into account. This is because many students may shift between full-time to part-time during their academic career.

Retention and graduation data are currently based on an "annual" definition. If a student enrolled for at least one term in the following academic year, that student is counted as retained. Graduation rates are based on last academic year enrolled, which may be different from academic year conferred.

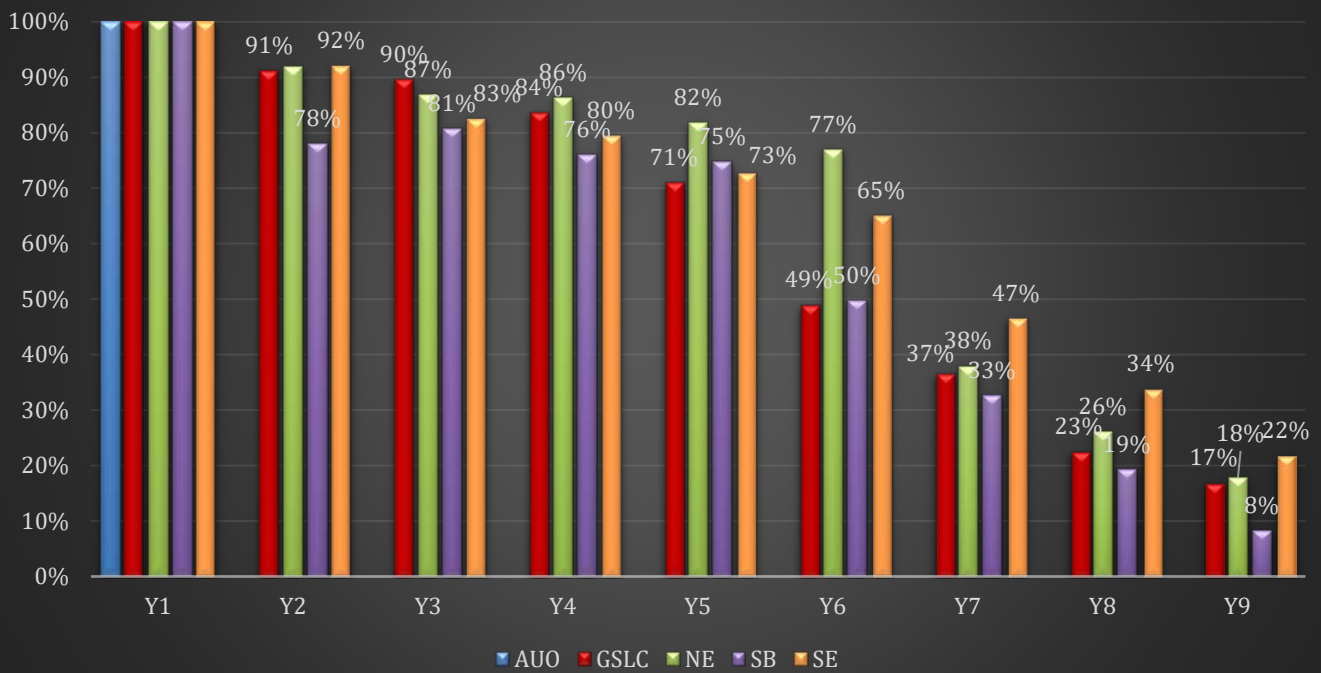
DEFINITIONS

COHORT COUNT: Distinct count of all new students by Academic Year. All academic terms of entry are included, from summer to spring.

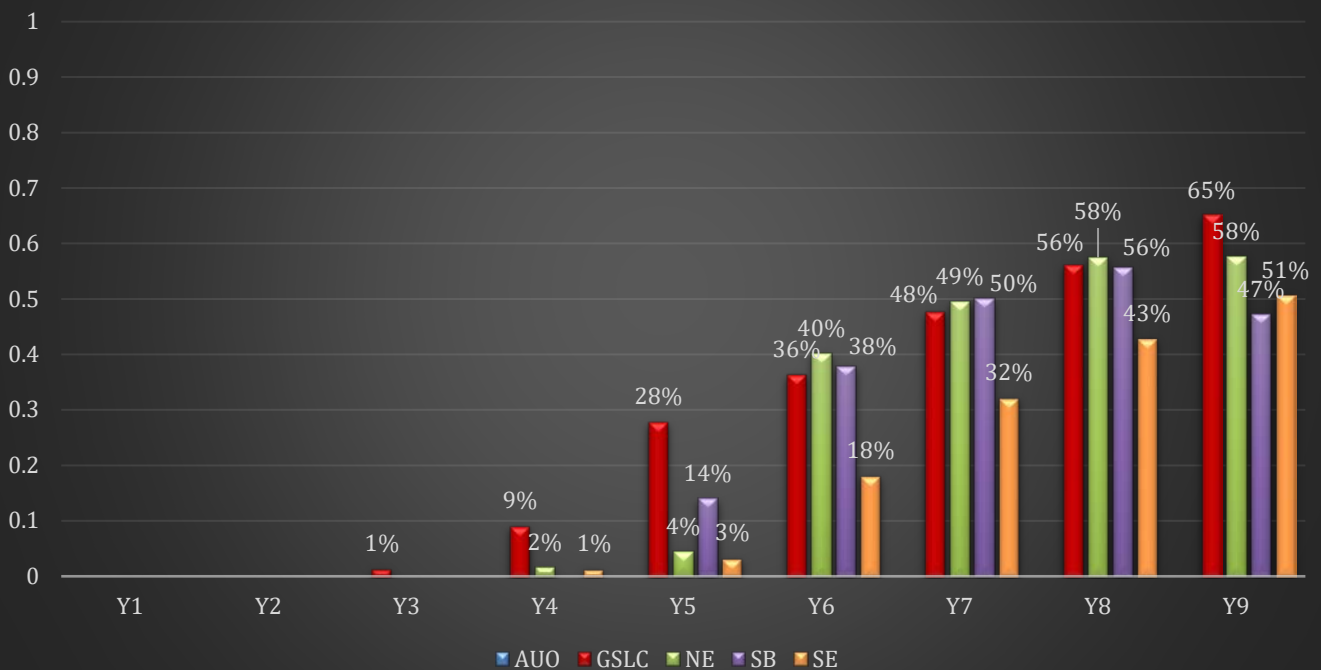




Retention Rates: Doctorate Degrees For Entering Cohorts AY2010-AY2020



Graduation Rates: Doctorate Degrees For Entering Cohorts AY2010-AY2019



7 Faculty and Staff

Employee numbers are for salaried and hourly employees for whom we collect payroll taxes only; they do not include work study students, temporary employees, employees from temporary agencies, or those on personal service contracts (aka “independent contractors”).

Please Note: There were changes in the classification of employees in late 2016 due to IRS regulations. This, along with other system changes/updates, has re-classified many employees across categories that may cause comparisons to previous years very difficult. Hence we are only showing data after 2016 in this section.

DEFINITIONS

HEADCOUNT: Unduplicated headcounts of employees by campus and Faculty/Staff status. Employees are counted only once per campus, regardless of the number of positions they hold. However, if an employee holds a position at more than one campus they are represented under each campus headcount. Likewise, if an employee hold both a teaching and non-teaching position they are represented under each category.

UNIVERSITY TOTAL: Headcount is unduplicated, this is not a sum of the campuses, but rather a true unduplicated headcount

CORE FACULTY: Full-time, benefited faculty positions on two-year renewable or three-year rolling contracts

NON-CORE FULL-TIME FACULTY: Full-time benefited faculty on one-year or two-year non-renewable contracts

PART-TIME FACULTY: Non-benefited faculty

ADMINISTRATOR: Senior leadership, Deans and Directors

ADMINISTRATIVE ASSOCIATE: Salaried mid-level staff positions

UNION STAFF: Represented hourly compensated employees

NON-UNION STAFF: Hourly compensated

PART-TIME EMPLOYEES: Positions hired on a short-term, a part-time basis

7.1 Faculty Headcount

Faculty Headcounts

		FY2017-18	FY2018-19	FY2019-20	FY2020-21
University Total	Core Full Time	115	110	132	129
	Non-core Full Time	77	86	85	83
	Part Time	738	723	734	740
	Total	930	849	1003	951
University Academic Affairs	Core Full Time		1	1	
	Non-core Full Time	1	1	1	1
	Part Time	1	1	1	1
	Total	2	3	3	2
GSLC	Core Full Time	11	11	10	10
	Part Time	5	6	7	6
	Total	16	17	16	16
Los Angeles	Core Full Time	24	24	27	28
	Non-core Full Time	13	13	14	17
	Part Time	231	227	233	205
	Total	268	243	271	250
Midwest	Core Full Time	6	5	3	
	Non-core Full Time	6	4	2	
	Part Time	53	48	19	1
	Total	65	60	53	1
New England	Core Full Time	43	35	46	46
	Non-core Full Time	24	30	23	12
	Part Time	149	147	160	176
	Total	216	205	211	234
Online	Core Full Time	2	2	3	6
	Non-core Full Time			1	2
	Part Time	33	41	46	90
	Total	35	18	63	98
Santa Barbara	Core Full Time	9	7	8	3
	Non-core Full Time	5	8	5	5
	Part Time	136	126	141	133
	Total	150	133	156	141
Seattle	Core Full Time	20	25	34	36
	Non-core Full Time	28	30	39	46
	Part Time	130	127	127	128
	Total	178	169	230	210

7.2 Faculty Demographics

Full Time Faculty - Gender

		FY2017-18	FY2018-19	FY2019-20	FY2020-21
University Total	Female	62%	62%	67%	67%
	Male	38%	37%	33%	33%
University Academic Affairs	Female	100%	100%	33%	33%
	Male	0%	0%	67%	67%
GSLC	Female	56%	55%	69%	71%
	Male	44%	46%	31%	29%
Los Angeles	Female	47%	49%	62%	60%
	Male	53%	51%	38%	40%
Midwest	Female	50%	43%	55%	50%
	Male	50%	57%	45%	50%
New England	Female	68%	66%	75%	74%
	Male	32%	32%	25%	26%
Online	Female	50%	50%	48%	52%
	Male	50%	50%	52%	48%
Santa Barbara	Female	75%	67%	67%	66%
	Male	25%	33%	33%	34%
Seattle	Female	66%	70%	73%	76%
	Male	34%	30%	27%	25%

Full Time Faculty - Race/Ethnicity

		FY2017-18	FY2018-19	FY2019-20	FY2020-21
University Total	American/Alaska Native	1%	1%	1%	1%
	Asian	8%	8%	5%	6%
	Black or African American	3%	4%	7%	6%
	Hawaiian/Pacific Islander				0%
	Hispanic/Latino	2%	2%	8%	8%
	Non Resident Alien	1%	0%	0%	0%
	Other/Unknown	1%	4%	6%	8%
	Two or More Races	2%	2%	2%	3%
	White	82%	79%	70%	69%
University Academic Affairs	Hispanic/Latino	0%	0%	33%	33%
	White	100%	100%	67%	67%
GSLC	Asian	22%	18%	6%	6%
	Black or African American	0%	0%	6%	6%
	Hispanic/Latino	0%	0%	6%	6%
	Other/Unknown	11%	18%	19%	18%
	White	67%	64%	63%	65%
Los Angeles	American/Alaska Native				0%
	Asian	13%	11%	7%	8%
	Black or African American	6%	8%	11%	11%
	Hawaiian/Pacific Islander				0%
	Hispanic/Latino	3%	3%	14%	14%
	Non Resident Alien				1%
	Other/Unknown	0%	3%	6%	7%
	Two or More Races	0%	0%	3%	3%
	White	78%	76%	56%	55%
Midwest	Black or African American	0%	0%	9%	13%
	Hispanic/Latino	0%	0%	2%	0%
	Other/Unknown	0%	14%	4%	8%
	White	100%	86%	85%	79%
New England	Asian	3%	4%	4%	4%
	Black or African American	5%	7%	7%	6%
	Hispanic/Latino	0%	0%	3%	3%
	Non Resident Alien	2%	0%		
	Other/Unknown	0%	2%	4%	7%
	Two or More Races	2%	2%	3%	3%
	White	89%	87%	80%	77%
Online	American/Alaska Native	0%	0%	2%	2%
	Asian	0%	0%	5%	4%

	Black or African American	0%	0%	6%	6%
	Hispanic/Latino	0%	0%	6%	8%
	Other/Unknown	0%	0%	14%	22%
	Two or More Races	0%	0%	2%	4%
	White	100%	100%	65%	54%
Santa Barbara	American/Alaska Native	0%	0%	1%	
	Asian	8%	13%	2%	2%
	Black or African American	0%	0%	4%	3%
	Hawaiian/Pacific Islander	0%	0%	1%	1%
	Hispanic/Latino	0%	0%	11%	9%
	Non Resident Alien	0%	0%	1%	
	Other/Unknown	8%	13%	8%	10%
	Two or More Races	0%	0%	1%	1%
	White	83%	73%	73%	74%
Seattle	American/Alaska Native	3%	2%	1%	2%
	Asian	11%	11%	7%	10%
	Black or African American	0%	2%	5%	3%
	Hispanic/Latino	5%	4%	4%	5%
	Other/Unknown	0%	0%	3%	3%
	Two or More Races	8%	6%	3%	4%
	White	74%	75%	76%	76%

7.4 Staff Headcount

Staff Headcount

		FY2017-18	FY2018-19	FY2019-20	FY2020-21
University Total	Administrative	43	42	46	46
	Admin Associate	114	113	114	101
	Non-Union Staff	111	118	117	104
	Part-Time Staff	93	97	83	76
	Union Staff	14	12	10	7
	Total	375	382	370	334
University Academic Affairs	Administrator	18	12	12	14
	Admin Associate	66	66	68	62
	Non-Union Staff	22	24	27	32
	Part-Time Staff	11	11	17	19
	Union Staff	6	6	8	7
	Total	123	119	132	134
GSLC	Administrator	2	3	2	2
	Admin Associate	1	2	2	3
	Part-Time Staff	3	4	3	3
	Total	6	9	7	8
Los Angeles	Administrator	8	8	10	9
	Admin Associate	7	8	7	7
	Non-Union Staff	25	27	28	20
	Part-Time Staff	29	36	21	27
	Total	69	79	66	63
Midwest	Administrator	5	2	1	
	Non-Union Staff	5	4	2	
	Part-Time Staff	2	2	1	1
	Union Staff	8	6	2	
	Total	20	14	6	1
New England	Administrator	6	6	6	6
	Admin Associate	9	10	10	8
	Non-Union Staff	28	28	24	22
	Part-Time Staff	26	21	18	15
	Total	69	65	58	51
Online	Administrator	1	2	7	9
	Admin Associate	4	6	8	5
	Non-Union Staff	1	3	2	3
	Part-Time Staff			2	1
	Total	6	11	17	18
Santa Barbara	Administrator	7	10	7	4

	Admin Associate	5	4	2	1
	Non-Union Staff	10	12	11	9
	Part-Time Staff	11	12	9	3
	Total	33	38	29	17
Seattle	Administrator	1	1	2	2
	Admin Associate	17	15	16	15
	Non-Union Staff	20	20	22	18
	Part-Time Staff	11	11	12	7
	Total	49	47	52	42

7.5 Staff Demographics

Full Time Staff - Gender

		FY2017-18	FY2018-19	FY2019-20	FY2020-21
University Total	Female	71%	70%	69%	68%
	Male	29%	30%	31%	32%
University Academic Affairs	Female	61%	60%	62%	61%
	Male	39%	40%	38%	39%
GSLC	Female	100%	100%	100%	100%
Los Angeles	Female	67%	75%	63%	68%
	Male	33%	25%	37%	32%
Midwest	Female	88%	80%	50%	67%
	Male	13%	20%	50%	33%
New England	Female	77%	76%	77%	76%
	Male	23%	24%	23%	24%
Online	Female	100%	75%	70%	47%
	Male	0%	25%	30%	53%
Santa Barbara	Female	86%	85%	79%	83%
	Male	14%	15%	21%	17%
Seattle	Female	70%	74%	77%	73%
	Male	30%	26%	23%	27%

Note: Includes all staff except those classified as Part Time.

Full Time Staff - Race/Ethnicity

		FY2017-18	FY2018-19	FY2019-20	FY2020-21
University Total	American/Alaska Native	1%	1%	1%	1%
	Asian	7%	7%	5%	4%
	Black or African American	8%	8%	10%	8%
	Hawaiian/Pacific Islander				0%
	Hispanic/Latino	8%	7%	9%	10%
	Other/Unknown	2%	2%	3%	4%
	Two or More Races	3%	4%	4%	5%
	White	70%	72%	68%	68%
University Academic Affairs	American/Alaska Native	1%	1%	1%	1%
	Asian	6%	8%	7%	5%
	Black or African American	3%	4%	7%	7%
	Hispanic/Latino	7%	6%	6%	5%
	Other/Unknown	1%	1%	1%	2%
	Two or More Races	3%	3%	5%	3%
	White	79%	76%	74%	78%
GSLC	American/Alaska Native	0%	20%	25%	14%
	White	100%	80%	75%	86%
Los Angeles	Asian	19%	14%	13%	8%
	Black or African American	19%	21%	22%	14%
	Hispanic/Latino	26%	14%	16%	17%
	Other/Unknown	0%	4%	6%	5%
	Two or More Races	0%	4%	3%	6%
	White	37%	43%	41%	52%
Midwest	American/Alaska Native	6%		0%	
	Black or African American	31%	40%	100%	50%
	White	63%	60%	0%	50%
New England	Asian	3%	0%	0%	0%
	Hispanic/Latino	0%	0%	6%	3%
	Other/Unknown				2%
	Two or More Races	6%	6%	3%	5%
	White	91%	94%	91%	90%
Online	Asian	50%	13%	0%	0%
	Black or African American	0%	0%	10%	11%
	Hispanic/Latino	0%	13%	0%	11%
	Other/Unknown	0%	13%	20%	16%
	Two or More Races	0%	13%	20%	26%
	White	50%	50%	50%	37%

Santa Barbara	Black or African American	5%	8%	71%	7%
	Hispanic/Latino	18%	23%	29%	28%
	Other/Unknown	9%	8%	7%	10%
	Two or More Races	5%	8%	7%	
	White	64%	54%	50%	55%
Seattle	American/Alaska Native	4%	0%	0%	2%
	Asian	15%	7%	3%	8%
	Black or African American	12%	11%	13%	10%
	Hawaiian/Pacific Islander				2%
	Hispanic/Latino	4%	4%	10%	17%
	Other/Unknown	8%	4%	0%	0%
	Two or More Races	4%	0%	0%	4%
	White	54%	75%	73%	58%

Note: Includes all staff except those classified as Part Time.

8 Financial Aid

This section reports on all students. Headcount is unduplicated by campus. If a student was enrolled at more than one campus in the same academic year, they are counted under both locations.

DEFINITIONS

\$ ACCEPTED: The sum of dollars accepted by the student for each academic period of the year

OF STUDENTS: The number of total students (unduplicated) receiving awards

University Total

		AY2016-17		AY2017-18		AY2018-19		AY2019-20		AY2020-21	
		\$ accepted	# of students	\$ accepted	# of students	\$ accepted	# of students	\$ accepted	# of students	\$ accepted	# of students
Federal	Grant - Pell	1,182,492	374	1,036,281	326	1,078,518	304	1,071,084	295	1,114,141	282
	Grant - SEOG	788,653	363	803,918	322	695,542	252	664,920	296	625,619	267
	Grant - TEACH	78,172	30	43,638	17	35,833	11	16,914	5	10,769	3
	Loan - Perkins	745,890	165	561,012	123						
	Loan - PLUS	12,128,264	749	12,254,747	752	13,081,716	752	13,226,789	749	12,965,722	699
	Loan - Subsidized	2,162,400	465	1,644,058	384	1,411,026	345	1,491,459	355	1,387,652	313
	Loan - Unsubsidized	41,891,403	2423	41,508,665	2389	41,646,396	2299	39,664,050	2228	42,318,831	2342
Institutional	Endowed	75,191	39	66,934	28	46,000	19	31,250	15	60,277	30
	Funded	730,587	239	948,964	196	499,285	150	422,947	158	396,636	145
	Tuition Discount	1,725,576	581	1,691,278	615	1,511,946	483	1,374,539	473	1,526,079	574
State	Grant	387,636	101	327,632	84	307,792	67	333,320	68	386,039	81
	Other Aid	3,750	2	875	2	128,000	16	144,000	18	118,750	16
Other	Other Financial Aid	90,515	57	68,108	42	59,150	30	55,756	30	73,396	31
	Outside Scholarships	132,151	24	69,701	16	42,247	17	97,250	24	112,291	27

Graduate School of Leadership and Change

		AY2016-17		AY2017-18		AY2018-19		AY2019-20		AY2020-21	
		\$ accepted	# of students	\$ accepted	# of students	\$ accepted	# of students	\$ accepted	# of students	\$ accepted	# of students
Federal	Loan - PLUS	737,422	31	886,729	38	1,209,630	44	1,205,515	43	1,331,706	47
	Loan - Unsubsidized	2,197,246	91	1,798,086	75	1,763,959	76	1,657,777	73	1,483,372	64
Institutional	Funded	55,833	16	37,166	11	66,500	18	57,000	15	60,500	16
	Tuition Discount	17,556	9	14,889	6	24,520	8	16,130	7	6,778	3

Los Angeles

		AY2016-17		AY2017-18		AY2018-19		AY2019-20		AY2020-21	
		\$ accepted	# of students	\$ accepted	# of students	\$ accepted	# of students	\$ accepted	# of students	\$ accepted	# of students
Federal	Grant - Pell	387,597	117	375,632	124	288,318	89	294,001	81	360,264	90
	Grant - SEOG	335,100	116	335,050	128	226,936	89	171,834	79	165,917	77
	Grant - TEACH	16,294	8	19,452	7	8,422	3	3,764	1		
	Loan - Perkins	245,657	50	204,436	41						
	Loan - PLUS	4,241,875	257	4,384,652	274	4,330,348	267	4,603,949	291	4,322,464	263
	Loan - Subsidized	625,375	149	569,210	142	451,693	105	488,139	111	498,526	106
	Loan - Unsubsidized	11,001,480	701	11,776,305	761	11,202,711	684	11,284,645	717	12,405,245	732
Institutional	Endowed	24,500	17	6,574	2						
	Funded	175,265	54	220,639	54	89,408	14	76,605	35	23,700	25
	Tuition Discount	779,319	256	718,719	307	666,929	236	653,646	224	686,657	266
State	Grant	55,873	10	36,948	7	72,546	11	108,439	15	35,424	9
	Other Aid									3,750	1

New England

		AY2016-17		AY2017-18		AY2018-19		AY2019-20		AY2020-21	
		\$ accepted	# of students	\$ accepted	# of students	\$ accepted	# of students	\$ accepted	# of students	\$ accepted	# of students
Federal	Grant - TEACH	11,184	3	2,802	1	7,472	1	9,398	3	6,997	2
	Loan - Perkins	75,984	11								
	Loan - PLUS	2,227,548	156	1,988,134	132	2,748,930	147	2,743,743	133	2,759,145	137
	Loan - Unsubsidized	12,770,628	557	12,151,897	566	11,941,183	544	11,242,975	513	12,289,210	584
Institutional	Endowed	28,441	15	40,360	22	41,000	18	26,250	14	50,277	27
	Funded	205,264	70	471,653	76	152,994	33	177,284	30	165,787	27
	Tuition Discount	586,492	179	728,791	194	570,462	134	442,701	133	570,814	187
Other	Other Financial Aid	67,573	45	48,758	34	59,150	30	55,756	30	73,396	31
	Outside Scholarships	92,651	17	47,801	9	26,247	8	73,250	16	88,291	19

Online

		AY2016-17		AY2017-18		AY2018-19		AY2019-20		AY2020-21	
		\$ accepted	# of students	\$ accepted	# of students	\$ accepted	# of students	\$ accepted	# of students	\$ accepted	# of students
Federal	Grant - Pell	290,043	88	215,212	68	405,908	104	523,860	126	464,989	109
	Grant - SEOG	12,350	78	111,024	60	158,000	56	269,224	124	231,304	100
	Loan - Perkins			31,583	7						
	Loan - PLUS							13,804	2	179,302	11
	Loan - Subsidized	689,230	125	349,632	81	408,019	118	564,636	140	501,700	117
	Loan - Unsubsidized	853,427	127	491,629	79	747,475	121	1,165,046	152	2,127,718	193
Institutional	Funded									38,238	19
	Tuition Discount			3,850	3			6,200	3	41,470	24
State	Grant	15,930	7	21,504	8	23,250	8	56,436	18	43,313	12
	Other Aid	1,250	1								

Santa Barbara

		AY2016-17		AY2017-18		AY2018-19		AY2019-20		AY2020-21	
		\$ accepted	# of students	\$ accepted	# of students	\$ accepted	# of students	\$ accepted	# of students	\$ accepted	# of students
Federal	Grant - Pell	232,769	69	208,318	56	174,955	54	151,257	48	148,787	42
	Grant - SEOG	197,525	73	154,018	56	153,605	56	125,929	51	115,000	46
	Grant - TEACH	9,724	4					3,752	1	3,772	1
	Loan - Perkins	109,004	26	79,750	19						
	Loan - PLUS	1,556,490	87	1,954,216	104	2,255,299	116	2,083,363	108	1,790,270	80
	Loan - Subsidized	384,608	84	299,864	65	230,238	55	214,874	53	157,817	39
	Loan - Unsubsidized	3,991,221	283	4,154,233	264	4,465,062	272	3,997,890	248	3,718,297	229
Institutional	Funded	185,794	59	63,000	20	30,500	18	34,502	26	41,400	24
	Tuition Discount	220,866	74	96,121	35	123,510	35	195,334	77	159,234	68
State	Grant	34,454	5	42,940	6	33,406	4	37,768	6	36,715	5
	Other Aid	2,500	1	875	2					5,000	1
Other	Other Financial Aid	22,942	12	19,350	8						
	Outside Scholarships	39,500	7	21,900	7	16,000	9	24,000	8	24,000	8

Seattle

		AY2016-17		AY2017-18		AY2018-19		AY2019-20		AY2020-21	
		\$ accepted	# of students	\$ accepted	# of students	\$ accepted	# of students	\$ accepted	# of students	\$ accepted	# of students
Federal	Grant - Pell	150,533	63	113,211	46	93,795	34	89,138	37	140,101	42
	Grant - SEOG	154,578	64	123,500	46	95,002	33	91,599	38	113,399	44
	Loan - Perkins	268,891	66	172,334	39						
	Loan - PLUS	3,353,446	217	3,004,187	202	2,519,709	176	2,557,065	171	2,582,835	163
	Loan - Subsidized	353,095	80	245,197	59	161,469	39	213,372	49	229,609	52
	Loan - Unsubsidized	8,611,682	508	9,326,250	511	9,988,179	512	10,047,317	510	10,294,989	546
Institutional	Endowed	17,250	5	20,000	4	5,000	1	5,000	1	10,000	3
	Funded	105,431	39	156,250	34	132,883	40	40,557	26	67,012	35
	Tuition Discount	3,000	2	5,700	3	8,213	10	18,834	12	61,126	26
State	Grant	235,359	53	161,643	36	128,715	26	122,802	24	270,587	55
	Other Aid					128,000	16	144,000	18	110,000	14

9 Finance**Revenue And Expense Metrics**

	FY2015-16	FY2016-17	FY2017-18	FY2018-19	FY2019-20
Revenue					
Tuition and Fees	59,325,440	58,625,610	58,501,979	58,748,470	59,491,125
Less Student Aid	-1,716,215	-1,917,605	-1,246,621	-1,447,011	-1,492,019
Net Tuition and Fees	57,609,225	56,708,005	57,255,358	57,301,459	57,999,106
Total Revenue and Gains	63,955,845	66,131,610	65,670,319	66,043,466	65,465,575
Educational and General					
Instruction	29,109,079	29,858,006	30,088,116	26,650,851	26,782,957
Research	159,244	268,943	296,290	362,255	88,504
Public Service	1,945,595	2,174,599	2,742,283	2,342,433	1,143,047
Academic Support	7,335,679	7,656,043	7,961,820	6,891,074	7,503,893
Student Services	5,867,033	5,613,087	5,656,965	4,987,928	5,488,338
Institutional Support	27,006,087	21,398,462	20,154,064	14,507,290	14,975,524
Operation and maintenance of plant				9,018,228	8,972,874
Scholarships and Fellowships	2,557,816	2,631,055	3,040,849	2,280,496	2,927,841
Total Educational and General	73,980,533	69,600,195	69,940,387	67,040,555	67,882,978
Auxiliary Expenses	387,159	351,909	325,643	268,917	272,062
Total Expenses	74,367,692	69,952,104	70,266,030	67,309,472	68,155,040

10 Development

Gift Revenue Dollars

		FY2016-17	FY2017-18	FY2018-19	FY2019-20	FY2020-21
Endowment gifts	University Total	\$59,492	\$8,763	\$6,420	\$8,970	\$126,354
	Central	4,800				3,456
	GSLC					112,533
	Los Angeles	1,000	50			
	Midwest	1,000		50	305	275
	New England	30,192	8,663	6,195	8,565	10,090
	Santa Barbara	1,000				
	Seattle	21,500	50	175	100	
Scholarship gifts	University Total	555,791	414,800	268,714	139,537	64,217
	Central		23,417	30,839	26,974	
	GSLC	63,020	20,779	22,966	65,536	
	Los Angeles	253,453	317,866	179,647	22,148	46,071
	Midwest	3,891	2,531	1,725	2,104	500
	New England	18,574	34,664	17,937	13,825	15,656
	Santa Barbara	190,045	3,503	3,685	350	450
	Seattle	26,808	12,041	11,915	8,600	1,540
Other restricted gifts	University Total	575,081	2,598,577	641,639	1,429,318	205,909
	Central	21,269	2,197,663	90,232	41,706	7,100
	GSLC		3,700	50	10,545	100
	Los Angeles	205,458	201,840	267,265	100,904	82,252
	Midwest	3,325	1,775	607	50	
	New England	211,292	144,401	77,100	1,255,538	106,332
	Santa Barbara	123,450	7,400	195,931	20,020	
	Seattle	10,289	41,798	10,455	555	10,125
Unrestricted gifts	University Total	351,076	198,212	158,759	213,090	254,609
	Central	214,336	71,358	139,939	172,826	239,382
	GSLC			535	350	611
	Los Angeles	8,350		3,250	625	715
	Midwest	7,552	1,600	2,550	790	1,250
	New England	45,633	21,781	11,335	36,430	11,515
	Santa Barbara	68,260	701	750	200	250
	Seattle	6,945	102,772	400	1,870	886
Gifts-in-Kind*	University Total	20,707	5,620	4,378	100	7,765,827
	Central		1,270			
	Los Angeles	8,199	100	1,300		
	Midwest	805	500			
	New England	3,138	1,850	1,300	100	4,000
	Santa Barbara	75	1,900	600		

	Seattle	8,490		1,178		
Grants and Contracts	University Total	1,891,339	2,778,746	2,285,591	1,203,032	7,761,827
	Central					5,110,622
	GSLC					
	Los Angeles	105,000		40,000	50,000	5,000
	Midwest	17,500	84,980	10,000		82,185
	New England	1,678,251	2,627,678	1,915,458	683,782	1,964,965
	Santa Barbara	28,500	30,700	20,250	51,250	25,077
	Seattle	62,088	35,388	299,883	418,000	573,979

*The estimated value for these donations has been provided by the donor.